



User Instructions

Residential Smart Meters

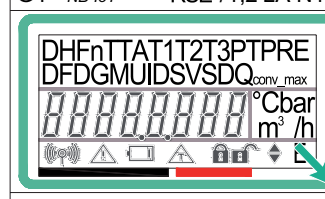
Models: **RSE / 1,2 LA N1**
RSE / 2,4 LA N1

This Handbook is an excerpt of the Gas Smart Meter User Manual and it is intended to provide information on how to access and how to interpret data shown on the meter display.

In normal conditions **the display is off** and no data is shown.

Pietro Fiorentini S.p.A.
via E. Fermi 8/10 - 36057 Arcugnano (VI) - Italy

G4 NB-IoT RSE / 1,2 LA N1

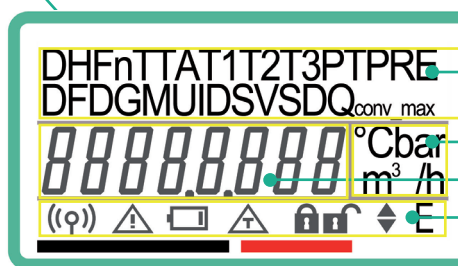


Upper Button

ENTER Button

Lower Button

To turn on the display press the
ENTER button.



MENU IDENTIFICATION

MEASURING UNIT

ALPHANUMERICAL DATA

ICONS & FLAGS

When the device is powered on, **a display self-test is performed**. Once completed, the menu appears showing the volume totalizer under reference conditions.

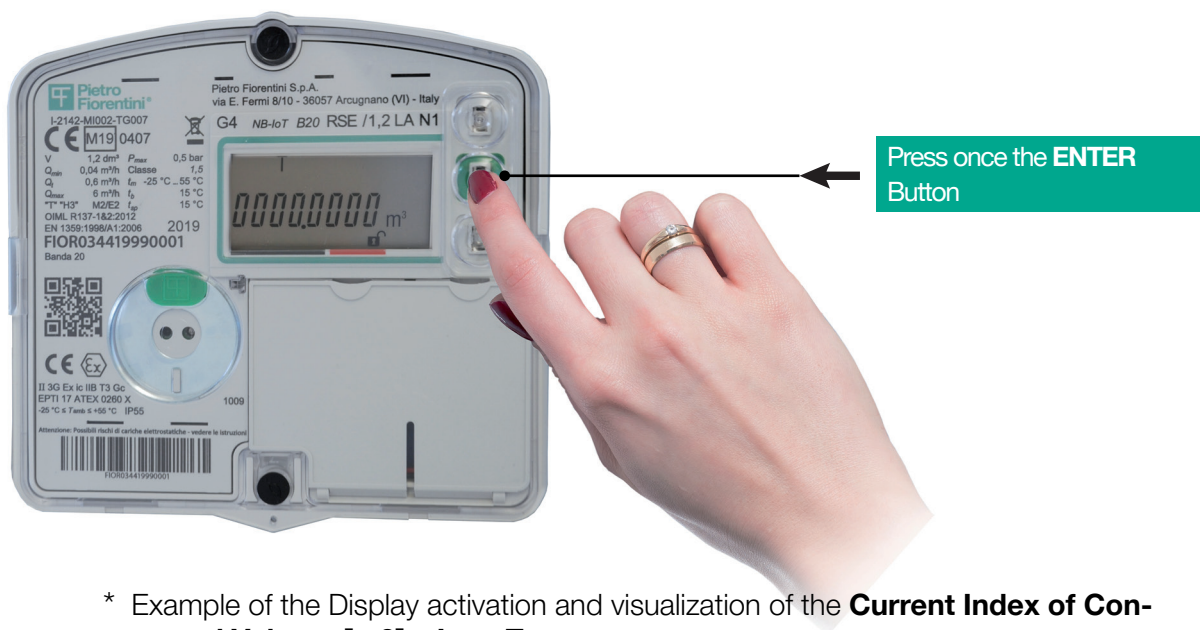
The totalizer is displayed **in cubic meters (m³) with 5 integer digits and 3 decimal places**. By pressing the **Lower** and **Upper** buttons, you can access the meter information listed in the following table.

After 2 minutes of inactivity the display **goes back to sleep mode** and turns off.

Icon	Meaning
T*	Volume totalizer Vb
ID	Identification code of the Delivery Point (PdR)
TA	Volume totalizer Vb in alarm state
DG	The page displays two pieces of information (yy xxxx): 'Alarm Count' (yy) and 'Diagnostic Word' (xxxx).
SV	'Valve status' as described in Chapter 5.5.3
DF	Closing date of the previous billing period
T PRE	Volume totalizer in alarm condition of the previous billing period
TA PRE	Alarmed volume totalizer from the previous billing period
Qconv_max PRE	Maximum conventional flow rate of the previous billing period
D	Current date, in the format DD-MM-YY
H	Current time, in the format DD-MM-YY

! WARNING!

This visualization menu is valid in the absence of an active tariff program (with daily tiers), as prescribed by the norm UNI 11291-6 (2021 edition)



* Example of the Display activation and visualization of the **Current Index of Converted Volume [m3] – Icon T**

For additional information about the meter configuration please contact your local gas distribution supplier.