

Pressure regulator



The **RCS 201** pressure regulator is a device designed in conformity to the high precision and reliability standards.

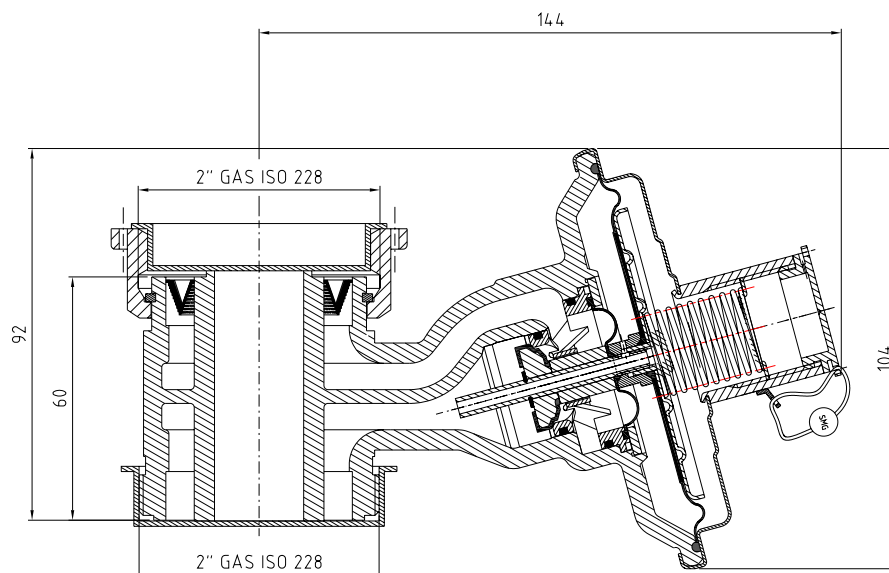
The **RCS 201** is used for natural and manufactured gas, LPG or other non corrosive, preliminarily treated stable gases.
It finds its application in wide range of domestic, commercial and industrial installations.

The **RCS 201** pressure regulator is a device equipped with double diaphragm (working diaphragm and balance diaphragm).

The downstream pressure is controlled by the spring load and the thrust derived from the downstream pressure.

The inlet pressure variation is balanced by means of the balance diaphragm which is connected to the valve rod.

The valve rubber pad ensures the hermetic tightness when the requested flow is nil.



		RCS 201
Version		Coaxial single pipe
Connections		2" ISO 228
Installation		any
Max. inlet pressure	[bar]	0,2
Outlet pressure range	[mbar]	21 / 25
Working temperature	[°C]	-20 ÷ 60
Weight	[Kg]	1,60

Technical features	
Body	Cast iron + cataphoresis
Cover	Galvanized steel
Diaphragms and valve rubber pad	Nitrile syntetic rubber (in according to EN 549)
Springs	Galvanized steel
Resistance to high temperature	EN 1775 annex A procedure B
Developed according to	A.R.G.B. version 1984